

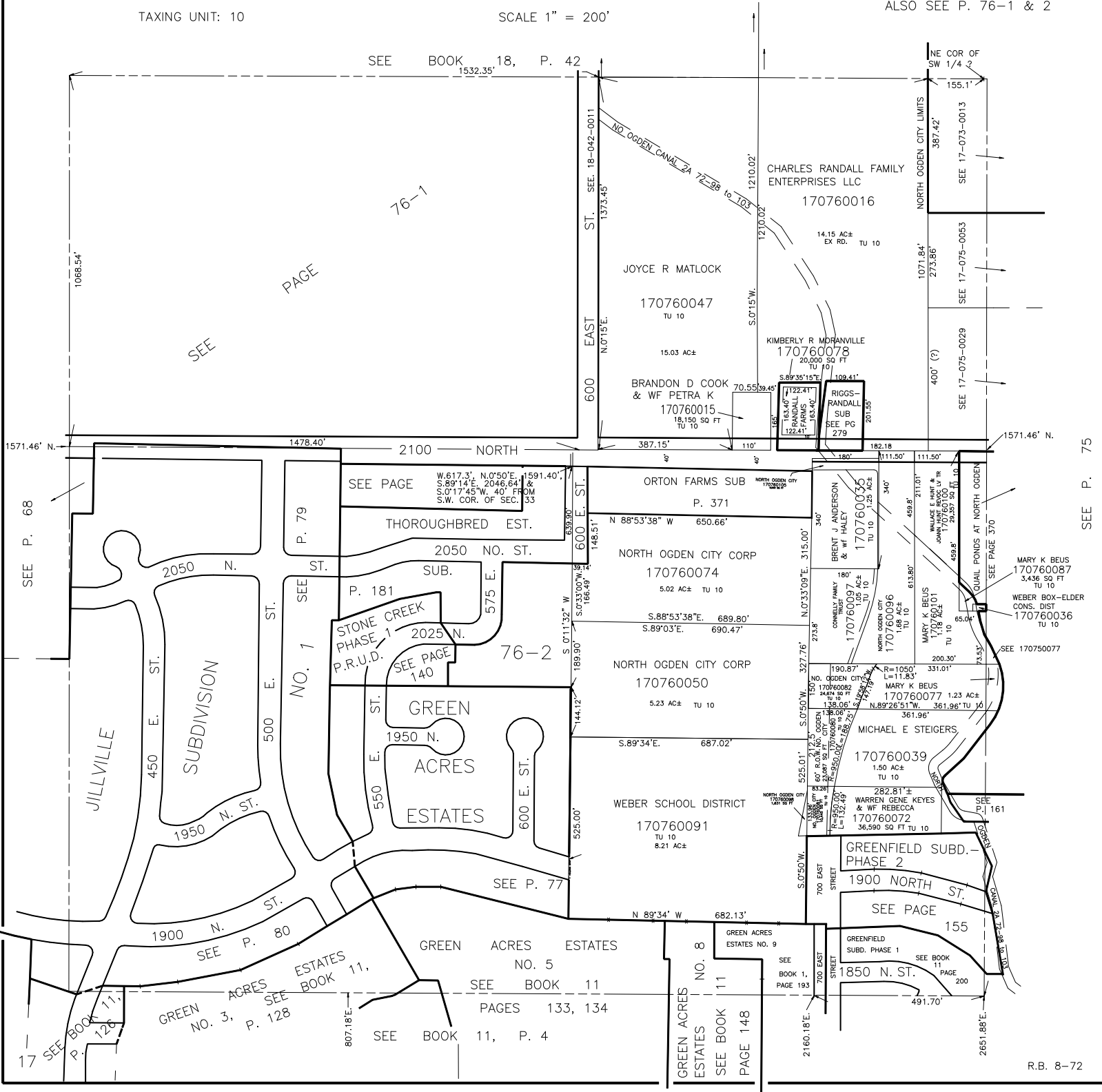
S.W. 1/4  
SECTION 33, T.7N., R.1W., S.L.B. & M.

IN NORTH OGDEN CITY & WEBER COUNTY

TAXING UNIT: 10

SCALE 1" = 200'

ALSO SEE P. 76-1 & 2



SEE P. 68

17 SEE BOOK 11, P. 126

GREEN ACRES ESTATES NO. 3, SEE BOOK 11, P. 128

SEE BOOK 11, P. 4

GREEN ACRES ESTATES NO. 5, SEE BOOK 11, PAGES 133, 134

GREEN ACRES ESTATES NO. 8, SEE BOOK 11, PAGE 148

SEE BOOK 11, PAGE 200

R.B. 8-72

SEE P. 75